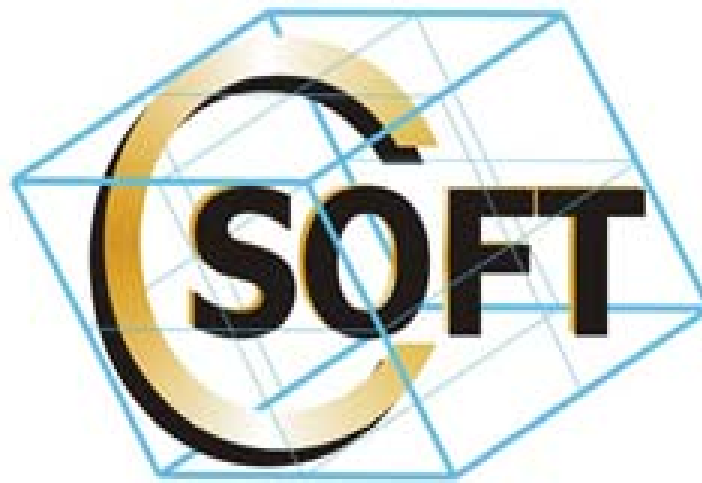


megaWare™ Application Suite

megaTrak™ Warehouse Management System



Csoft Corporation

MS SQL Server™ / IIS / WINDOWS 2000 / 2003 / XP Platform

megaTrak First Steps

Version 2.5

Prepared by:

Bryan Krenzin

Csoft Corporation

Document Version 2.5.7

TABLE OF CONTENTS

1.0 MEGATRAK™ FIRST STEPS3

1.1 MEGATRAK™ HARDWARE4

1.2 SERVER HARDWARE4

1.3 BARCODE SOFTWARE AND HARDWARE4

2.0 MEGATRAK™ NETWORK INFRASTRUCTURE.....5

2.1 STEP 1: SITE SURVEY5

2.2 STEP 2: SERVER STRUCTURE.....5

2.3 STEP 3: HAND-HELD PROTOCOL5

3.0 MEGATRAK SERVER SOFTWARE.....5

3.1 STEP 1: MICROSOFT WINDOWS 20035

3.2 STEP 2: MICROSOFT SQL SERVER.....5

3.3 STEP 3: SYSPRO E.NET5

4.0 REMOTE ACCESS AND TEST ENVIRONMENT6

4.1 STEP 1: VPN ACCESS.....6

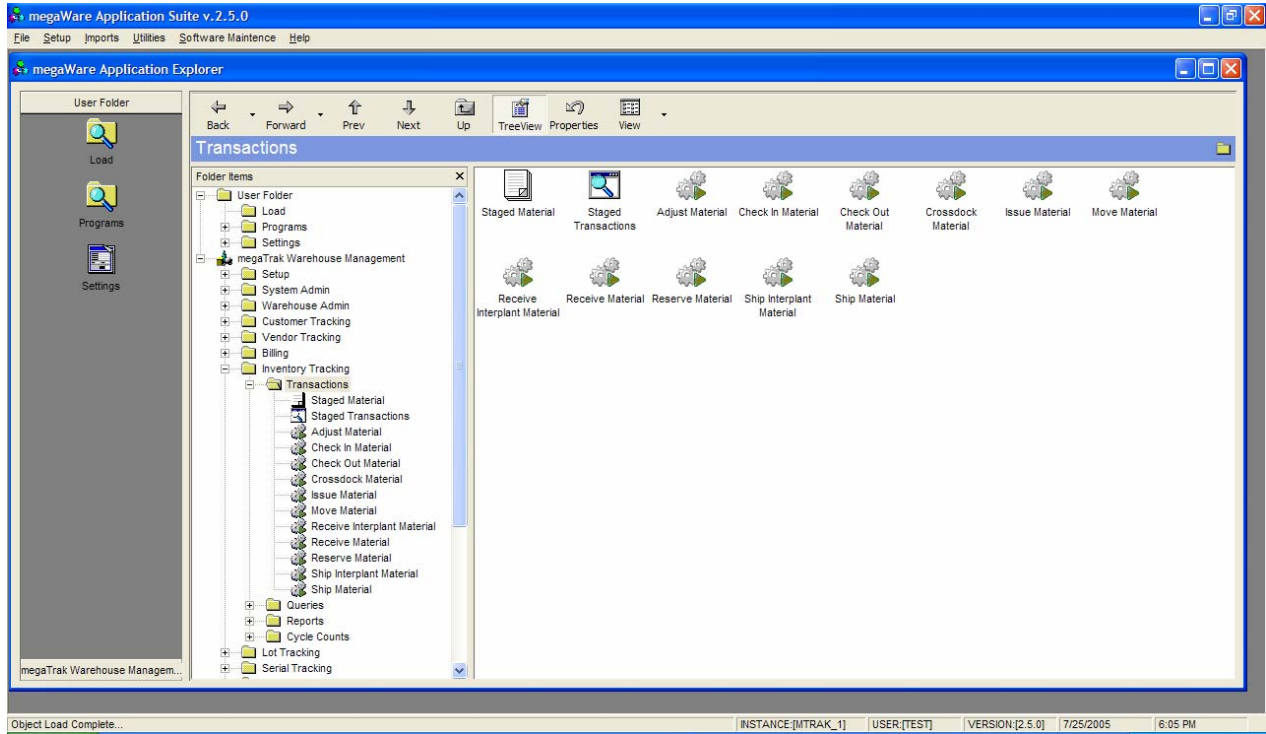
4.2 STEP 2: RDP ACCESS6

4.3 STEP 3: SYSPRO TEST ENVIRONMENT.....6

1.0 megaTrak™ First Steps

The purpose of this document is to take the first steps on a megaWare installation. This document is a general guideline of the things that need to be done when starting a project.

Main Menu Screen



1.1 megaTrak™ Hardware

The goal of this document is to define the beginning processes to start a megaTrak project. The first item that needs to be decided at this point the hardware infrastructure.

1.2 Server Hardware

The server architecture must be decided first, whether megaTrak is going to be used in a COM or DCOM fashion in conjunction with SYSPRO. This will decide whether or not megaTrak will reside on the same or different servers than SYSPRO. A sample server document will be included with this document. megaTrak can be run in either a dual or single server mode with SYSPRO.

1.3 Barcode Software and Hardware

Barcode hardware includes the following items. Barcode hardware includes Hand-Helds, Printers and Access Points. We provide the initial numbers on the hardware, but only as a guideline. You do not have to buy the hardware from us.

The below table outlines the Third-Party software licenses required to complete this project.

ITEM	UNITS	PRICE	EXT	NOTES
Wavelink RF Manager	15	\$225	\$3,375	WaveLink RF server and unit licenses.
BarTender Barcode Printing Software	1	\$495	\$495	Desktop Barcode Printer to Label all items. Will interface with qwikTrak™
SUBTOTAL			\$3,870	
SALES TAX		8.25%	\$319	
TOTAL LICENSES			\$4,189	

The table below outlines the barcode hardware required for the project. The chosen manufacturer of the barcode data collection unit is Symbol Technologies for data collection and Zebra for label printing. Not included in the costs below are the network infrastructure installations and integration of access points.

ITEM	UNITS	PRICE	EXT	NOTES
Symbol MC-9090 *	15	\$2,600	\$39,000	Spectrum 24 Hand-Held Data entry unit (802.11b)
Symbol WS-2000 Wireless Switch / Access Point	7	\$1,200	\$9,600	Spectrum 24 Wireless Access Point (802.11b)
Symbol Accessories	15	\$250	\$3,750	Charging Cradles
Zebra 105SL Barcode Printer	1	\$1,475	\$1,475	Thermal Transfer Barcode Printer
SUBTOTAL			\$58,825	
TAX		8.25%	\$4,440	
TOTAL			\$63,265	

2.0 megaTrak™ Network Infrastructure

2.1 Step 1: Site Survey

The first task that needs to be done for deciding network infrastructure is to have a site survey performed. A site survey is performed to find the dead spots in the warehouse and to properly place the Access Points so proper communication to and from the Hand-Helds is optimized to it's fullest potential. A site survey is to be performed by a local Symbol / Cisco service provider that we will give you contact information.

2.2 Step 2: Server Structure

As stated above, a multi or single server setup can be attained depending on site volume, however many servers may be desired. Options include:

- Single Server, SYSPRO, megaTrak and Communications Server (Wavelink) on one server.
- Dual Server: SYSPRO and megaTrak on one server and Communications Server (Wavelink) on the other server.
- Dual Server: SYSPRO and Communications Server on one server and megaTrak on its own server.
- Tri Server: SYSPRO, megaTrak and Communication Server (Wavelink) all on separate servers.

2.3 Step 3: Hand-Held Protocol

The Hand-Held protocol is 802.1b. The network must be a fully functional 802.11 network for megaTrak to communicate back and forth.

3.0 megaTrak Server Software

The server software required for megaTrak is listed below:

3.1 Step 1: Microsoft Windows 2003

megaTrak requires Microsoft Windows 2003 to run on the server. It must have the ability to start a session on the server as megaTrak requires a session to be running to support it's queues.

3.2 Step 2: Microsoft SQL Server

megaTrak requires Microsoft SQL Server 2000, a minimum of 25 CALS, depending on how many users of course. There are several pricing models for Microsoft – by processor / machine (unlimited) and by User Seats (Cals). If it decided to purchase the hardware through a dealer such as Dell, they offer price breaks on Microsoft SQL Server when you purchase both the server and software.

3.3 Step 3: SYSPRO e.net

megaTrak requires SYSPRO e.net to run on the server it is located. There is a separate document outlining the modules necessary for the installation.

4.0 Remote Access and Test Environment

To properly setup a test environment before an initial site visit, Csoft will need remote access to the server MT is going to reside on as well as SYSPRO and the communication server if they are split.

4.1 Step 1: VPN Access

Csoft will need a secure remote access to your network via VPN. This is needed for both Terminal Server / Remote Desktop as well as drive access for setup and database file downloads.

4.2 Step 2: RDP Access

Csoft will need the ability to log in via Remote Access so it can manipulate the server(s). This will be used to set up the megaTrak Test Environment.

4.3 Step 3: SYSPRO Test Environment

You will need to install a SYSPRO test environment for use by CSoft. We will need to have access to this long before we visit onsite. This includes the e.net libraries from SYSPRO as well.